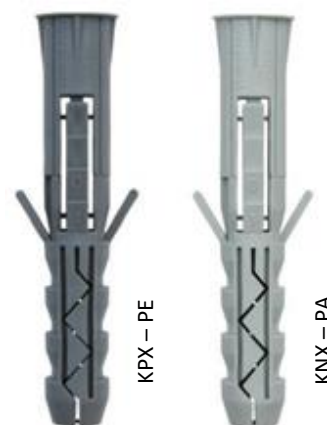


PRODUCT DATA SHEET – KPX/KNX

Section 1. PRODUCT DESCRIPTION

EXPANSION PLUG PLASTIC SLEEVE – KPX/KNX

Expansion plug plastic sleeve KPX is made of polyethylene, and KNX is made of polyamide. It is used for fixing of members in substrates made of solid materials. The sleeve is held firmly in place as the expansion lugs on its outside prevent it from turning once it is placed in the hole. On the inner side sleeves have guide lugs on the entire length to ensure guiding of a screw when being installed.

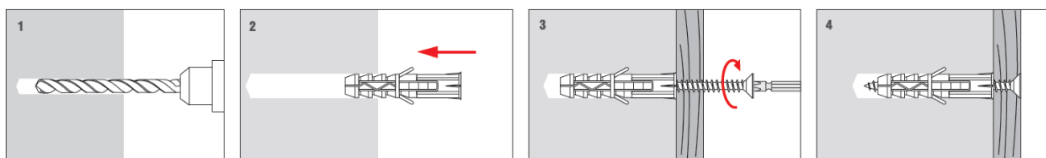


Types of substrates on which plastic sleeve KPX/KNX can be installed:

- Concrete
- Solid clay brick
- Solid sand-lime brick

Section 2. METHOD OF INSTALLATION

1. Original sleeves delivered by the manufacturer can be used only
2. Before fastening identify the substrate on which sleeve will be installed
3. Select adequate length of the sleeve so that expansion zone is in the construction material of the wall
4. Use proper method of drilling according to a substrate type
5. Diameter of drilled holes should match diameter of the sleeves used
6. Drilled holes in substrates of solid materials should be deeper by min. 10mm compared to the sleeve anchorage depth
7. Clean the holes in solid materials of drillings with a back and forth motion of the drill at a reduced speed
8. Then insert the sleeve into a drilled hole, and drive the matched screw through the element being fixed until it completely penetrates the sleeve (pre-fastening installation)
9. The sleeve is not a structural element



Section 3. TECHNICAL DATA

SELECTION TABLE						
Product code		Sleeve diameter and length	Recommended screw diameter	Min. anchorage depth	Min. depth of drilled hole	Number of pieces in a box
KPX	KNX	$d_k \times L_k$ [mm]	d_w [mm]	h_{eff} [mm]	h_0 [mm]	[pcs]
KPX-06030	KNX-06030	6x30	3,5-4	30	40	1000
KPX-08040	KNX-08040	8x40	4-6	40	50	500
KPX-08050	KNX-08050	8x50	4-6	50	60	400
KPX-10050	KNX-10050	10x50	5-7	50	60	300
KPX-10060	KNX-10060	10x60	5-7	60	70	200
KPX-12060	KNX-12060	12x60	6-8	60	70	150
KPX-12080	KNX-12080	12x80	6-8	80	90	100
KPX-14080	KNX-14080	14x80	10	80	90	100
KPX-16100	KNX-16100	16x100	12	100	110	50

Section 4. REMARKS

1. All previous versions of this Product Data Sheet shall cease to be valid
2. Data given in this Product Data Sheet is in accordance with current knowledge and published in good faith. KLIMAS Sp. z o.o. is not responsible for correctness and quality of the fixing if recommendations regarding method of use and installation are not followed.