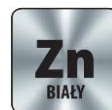


Section 1. PRODUCT DESCRIPTION

FOUNDATION ANCHOR – LB

Foundation anchor is used as a fastener for timber-to-concrete or metal-to-concrete connections, mainly as a base for post when hiding the anchor inside a pole is not required. Ensures a very tight connection. It is designed to transfer vertical forces. Made from steel sheet. For connections, pin type fasteners, such as screws or bolts, can be used. Anchors have their own nailing diagrams. If no information is given it is assumed that they should be fixed using all available holes. Fasteners are coated with blue zinc-plated coating ensuring corrosion protection and come in fire resistance class A1.



Features and advantages of fasteners:

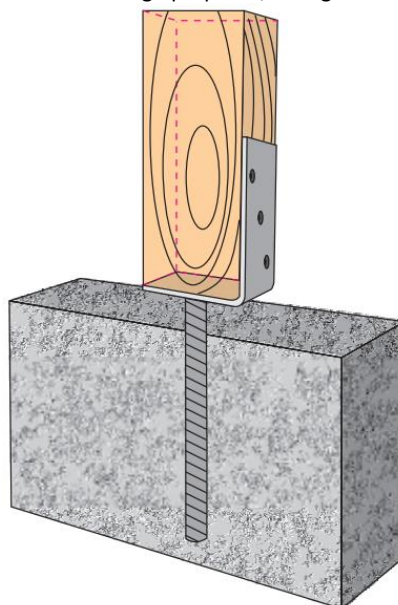
- easy installation
- savings in construction materials
- stability and rigidity of the structure
- high quality, durability and aesthetics
- corrosion protection
- fire resistance class – A1



Fasteners hold National Technical Assessment: ITB-KOT-2019/0439 Rev. 1

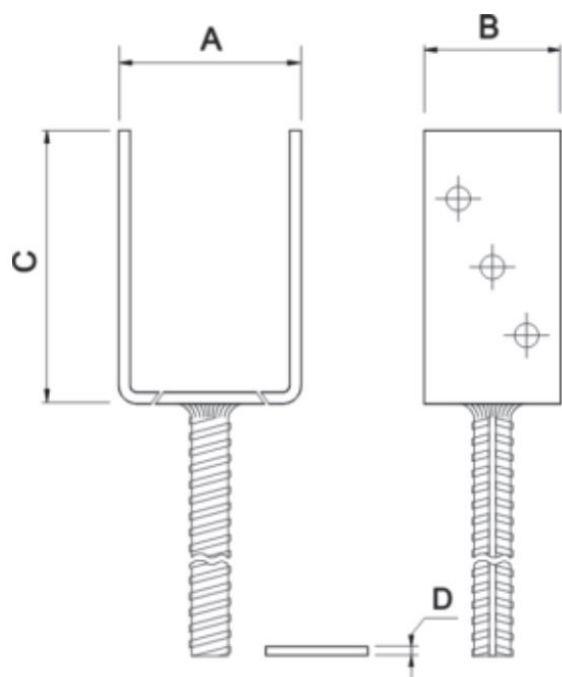
Section 2. METHOD OF INSTALLATION

1. Original fasteners delivered by the manufacturer can be used only
2. The fastened wooden elements should be defect-free (no knots, cracks, colourations, rots, structure and shape defects, mechanical damages) as any defects reduce their strength
3. For connection, suitable pin type fasteners should be selected with an adequate length depending on thickness of the elements to be fastened
4. Pin type fasteners should conform to PN-EN 14592+A1:2012
5. Screws and nails should be used directly in wooden substrate without prior drilling
6. Fasteners should be used in accordance with technical design prepared, taking into account Polish standards and building regulations

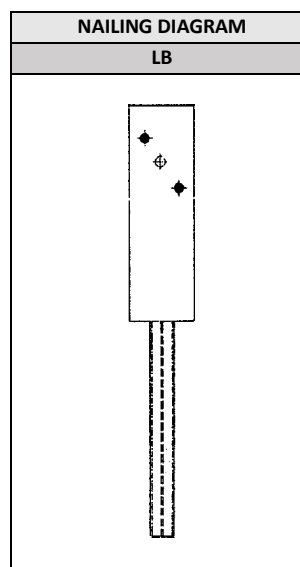


PRODUCT DATA SHEET – LB

Section 3. TECHNICAL DATA



SELECTION TABLE							
Product marking	Dimensions [mm]				No. of holes	Design resistance	Number of pieces in a box
	A	B	C	D	ø11	[kN]	pcs
LB-01(X10)	80	60	130	5	6	1,86	10
LB-02(X10)	90	60	130	5	6	1,86	10
LB-03(X10)	100	60	130	5	6	1,86	10
LB-04(X10)	110	60	130	5	6	1,86	10
LB-05(X10)	160	60	130	5	6	1,86	10
LB-06-OT(X10)	89	90	135	5	3	1,86	10
LB-07(X10)	130	60	130	5	6	1,86	10
LB-08(X10)	150	60	130	5	6	1,86	10



Section 4. REMARKS

1. All previous versions of this Product Data Sheet shall cease to be valid
2. Data given in this Product Data Sheet is in accordance with current knowledge and published in good faith. KLIMAS Sp. z o.o. is not responsible for correctness and quality of the fixing if recommendations regarding method of use and installation are not followed.