

PRODUCT DATA SHEET – RUL/RUC/RUO

Section 1. PRODUCT DESCRIPTION

UNIVERSAL PLUG WITH STRAIGHT/ROUND/EYE-BOLT HOOK – RUL/RUC/RUO



Universal plug RUL/RUC/RUO comprises sleeve made of polyamide and steel screw with straight/round hook/eye-bolt hook with protective zinc coating. It is designed for fixing of light-duty interior finish systems and lightweight installations on all building substrates. The sleeve has anti-rotation lugs which keep the plug-in place when screwing in the screw. Special design of the plug ensures correct guidance of the screw and reliable connection. Screw hooks come with special stop collar which makes the screw rest on the plug and enables correct installation.

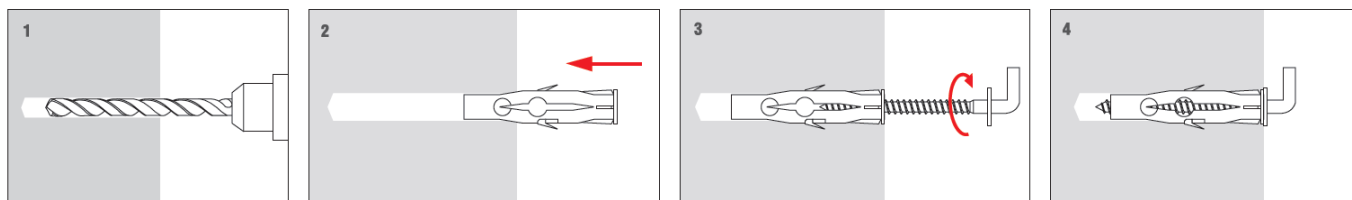
Types of substrates on which universal plug RUL/RUC/RUO can be installed:

- Concrete
- Solid clay brick and sand-lime brick
- Hollow clay brick and sand-lime brick
- Plasterboard



Section 2. METHOD OF INSTALLATION

1. Original plugs delivered by the manufacturer can be used only
2. Before installation identify a substrate in which the plug will be installed and compare loads which the plug will carry to resistance values given in Product Data Sheet or Technical Approval
3. Select adequate length of plug (sleeve + screw)
4. Use proper method of drilling according to a substrate type (holes in masonry substrate made of hollow blocks should be drilled using a drill without impact)
5. Diameter of drilled holes should match diameter of the plugs used
6. Drilled holes in substrates of solid materials should be deeper by min. 10mm compared to the plug anchorage depth
7. Clean the holes in solid materials of drillings with a back and forth motion of the drill at a reduced speed
8. Then insert the plug into a drilled hole, and drive the screw until it completely penetrates the sleeve (pre-fastening installation)



PRODUCT DATA SHEET – RUL/RUC/RUO

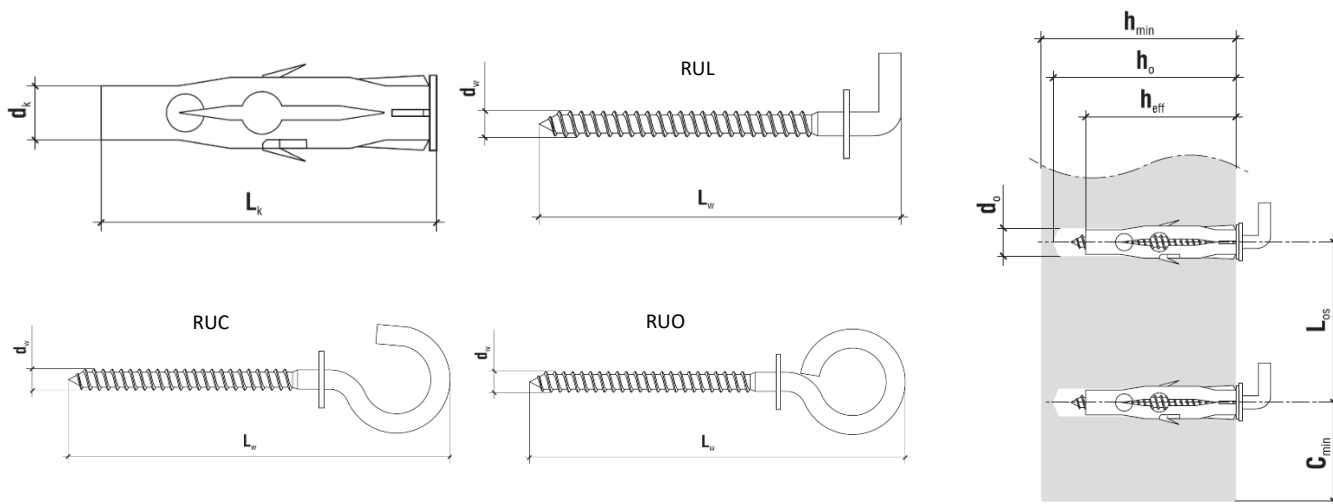
Section 3. TECHNICAL DATA

TECHNICAL PARAMETERS				
Parameter	Unit	Value		
		RUL	RUC	RUO
Plug diameter	d_k [mm]	6/8		
Hole/drill diameter	d_o [mm]	6/8		
Effective anchorage depth	h_{eff} [mm]	35/50*		
Drilled hole depth	h_o [mm]	45/60*		
Sleeve material	[-]	PA – polyamide		
Screw material	[-]	Zinc-plated steel		

*for RUL-8, RUC-8, RUO-8

RESISTANCE		
Substrate type	Design pull-out resistance [kN]	
	RUL/RUC/RUO-6	RUL/RUC/RUO-8
Concrete C20/25	0,20	0,28
Solid clay brick	0,14	0,20
Hollow brick	0,14	0,20
Plasterboard 12.5mm	0,18	0,26

INSTALLATION PARAMETERS			
Plug type	Min. substrate thickness	Min. distance from edge	Min. axial distance
	h_{min} [mm]	c_{min} [mm]	L_{os} [mm]
RUL/RUC/RUO-6	70	70	140
RUL/RUC/RUO-8	100	100	200



SELECTION TABLE			
Product code	Sleeve diameter and length	Screw diameter and length	Number of pieces in a box
	$d_k \times L_k$ [mm]	$d_w \times L_w$ [mm]	[pcs]
RUL-06048	6x35	3,5x48	50
RUL-08065	8x50	4,5x65	25
RUC-06065	6x35	3,5x65	50
RUC-08083	8x50	4,5x83	25
RUO-06064	6x35	3,5x64	50
RUO-08084	8x50	4,5x84	25

Section 4. REMARKS

1. All previous versions of this Product Data Sheet shall cease to be valid
2. Data given in this Product Data Sheet is in accordance with current knowledge and published in good faith. KLIMAS Sp. z o.o. is not responsible for correctness and quality of the fixing if recommendations regarding method of use and installation are not followed.