

## PRODUCT DATA SHEET – HOX/ZHO

### Section 1. PRODUCT DESCRIPTION

#### EXPANSION PLUG WITH EYE HOOK – HOX PLASTIC DISC FOR COVERING HOX EYE-HOOK HOLES – ZHO

Expansion plug HOX comprises sleeve made of polyamide and steel screw with eye hook with protective zinc coating. It is designed mainly for fixing of scaffolding systems to buildings.

Types of substrates on which expansion plug HOX can be installed:

- Concrete
- Solid clay brick
- Solid sand-lime brick

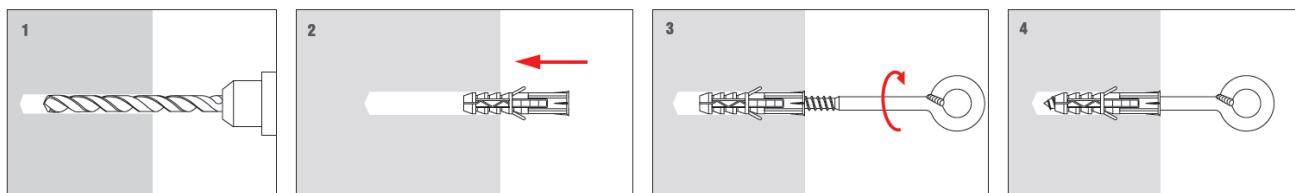
Plastic disc ZHO is used for covering HOX eye hooks holes. It comes in three colours: white, grey and black. Outer collar diameter is 28mm.

Expansion plugs hold National Technical Assessment: ITB-KOT-2018/0528 Rev. I



### Section 2. METHOD OF INSTALLATION

1. Original expansion plugs delivered by the manufacturer can be used only
2. Before installation identify a substrate in which the plug will be installed and compare loads which the plug will carry to resistance values given in Product Data Sheet or National Technical Assessment
3. Select adequate length of the plug so that expansion zone is in the construction material of the wall
4. Diameter of drilled holes should match diameter of the plugs used
5. Drilled holes in substrates of solid materials should be deeper by min. 10mm compared to the plug anchorage depth
6. Clean the holes in solid materials of drillings with a back and forth motion of the drill at a reduced speed
7. Then insert the plug into a drilled hole, and drive the screw until it completely penetrates the sleeve
8. The ZHO disc should be fitted in HOX eye-hook holes



### Section 3. TECHNICAL DATA

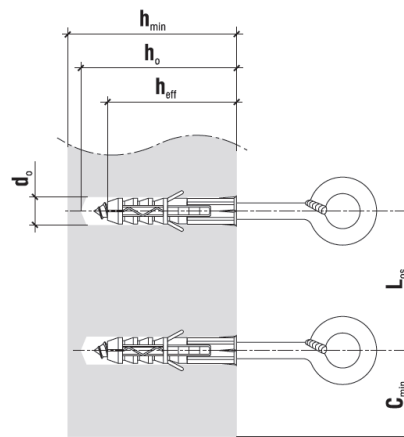
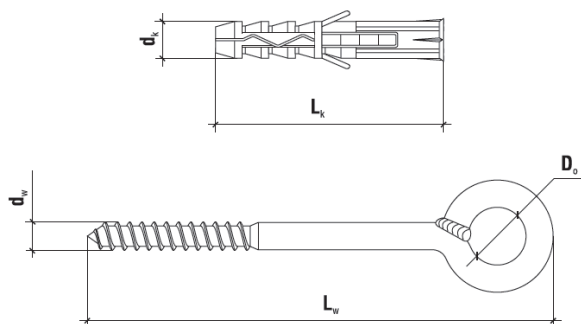
TECHNICAL PARAMETERS – HOX			
Parameter	Unit	Value	
		HOX-14	HOX-16
Plug diameter	$d_k$ [mm]	14	16
Hole/drill diameter	$d_0$ [mm]	14	16
Effective anchorage depth	$h_{eff}$ [mm]	80	100
Drilled hole depth	$h_0$ [mm]	90	110
Sleeve material	[-]	PA – polyamide	
Screw material	[-]	Zinc-plated steel	
National Technical Assessment	[-]	KOT-2018/0528	

RESISTANCE – HOX		
Substrate type	Design pull-out resistance [kN]	
	HOX-14	HOX-16
Concrete C20/25 ÷ C50/60	0,33	0,67
Solid clay brick	0,48	1,00
Solid sand-lime brick	1,00	1,80

INSTALLATION PARAMETERS – HOX			
Plug type	Min. substrate thickness	Min. distance from edge	Min. axial distance
	$h_{min}$ [mm]	$c_{min}$ [mm]	$L_{os}$ [mm]
HOX-14	120	160	160/240*
HOX-16	150	200	200/300*

\*for concrete substrate/other substrates

**PRODUCT DATA SHEET – HOX/ZHO**



SELECTION TABLE – HOX				
Product code	Sleeve diameter and length	Screw diameter and length	Hook diameter	Number of pieces in a box
	$d_k \times L_k$ [mm]	$d_w \times L_w$ [mm]	$D_o$ [mm]	[pcs]
HOX-14120	14x80	10x165	25	20
HOX-14160	14x80	10x205	25	20
HOX-14190	14x80	10x235	25	20
HOX-14230	14x80	10x275	25	20
HOX-16160	16x100	12x210	25	15
HOX-16190	16x100	12x240	25	15
HOX-16230	16x100	12x280	25	15
HOX-16300	16x100	12x350	25	15
HOX-16350	16x100	12x400	25	15



SELECTION TABLE – ZHO				
Product code	Colour	Plastic disc diameter [mm]	Collar diameter [mm]	Number of pieces in a box
ZHO-BI	white	14	28	100
ZHO-SZ	grey	14	28	100
ZHO-PI	sandy	14	28	100

**Section 4. REMARKS**

1. All previous versions of this Product Data Sheet shall cease to be valid
2. Data given in this Product Data Sheet is in accordance with current knowledge and published in good faith. KLIMAS Sp. z o.o. is not responsible for correctness and quality of the fixing if recommendations regarding method of use and installation are not followed.