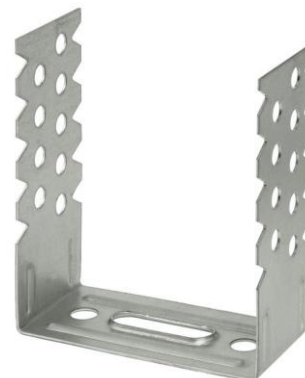


PRODUCT DATA SHEET – ES

Section 1. PRODUCT DESCRIPTION

BRACKET FOR CD60/27 SECTIONS – ES

Bracket ES is used for fixing of CD 60/27 steel sections in plasterboard ceiling and wall framing. Bracket is made of zinc plated sheet steel DX51D with hot-dip galvanized coating min. Z100. Brackets conform to the requirements of reaction to fire (EUROCLASS A1) and are made in accordance with durability A:B Class.



Brackets conform to European standard: PN-EN 13964

Section 2. METHOD OF INSTALLATION

1. Original brackets delivered by the manufacturer can be used only
2. Before installation identify a substrate in which the bracket will be installed and compare loads which the bracket will carry to the resistance values
3. At first **UD** wall profiles are mounted to determine the level of a suspended ceiling
4. Consequently system of main profiles **CD**, which should run parallel to one another every 100cm, is determined
5. Brackets **ES** are arranged on each run of main profiles **CD** every 70-90cm
6. Then, in these points, holes are drilled and using expansion plugs, brackets **ES** are mounted
7. Ends of profiles **CD** are placed in profiles **UD** and screwed successively to brackets **ES** using **TEX** screws
8. Plasterboards are screwed to profiles **CD** using **KGM** screws (max. profile thickness up to 0.75mm) or **KSSG** screws (max. profile thickness up to 2.5mm) every 15cm
9. Once plasterboards are mounted, tape is applied on their joint and filled with joint compound

Section 3. TECHNICAL DATA

RESISTANCE / SELECTION TABLE			
Code and size	Steel thickness [mm]	Permissible load F_{dop} [kN]	Number of pieces in a box [pcs.]
ES-60-75-08	0,80	0,40	100
ES-60-125-08	0,80	0,40	100

Section 4. REMARKS

1. All previous versions of this Product Data Sheet shall cease to be valid
2. Data given in this Product Data Sheet is in accordance with current knowledge and published in good faith. KLIMAS Sp. z o.o. is not responsible for correctness and quality of the fixing if recommendations regarding method of use and installation are not followed.